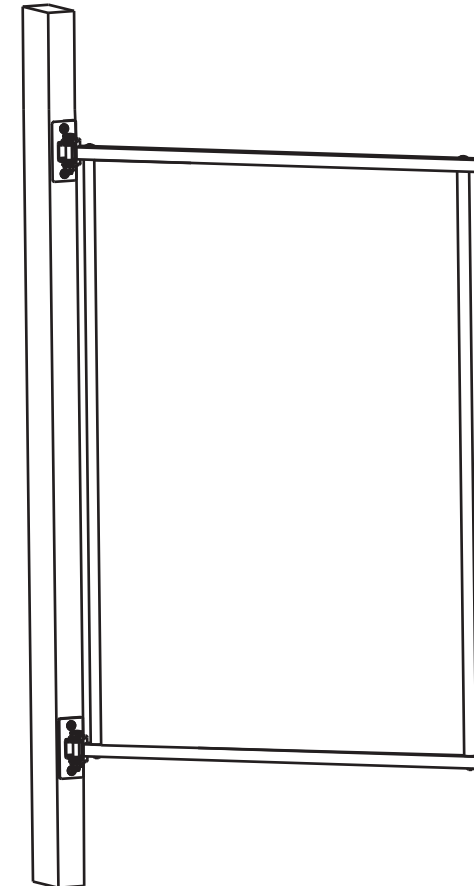


*Store Your Board®*




# INSTALLATION GUIDE

## PIVOT PANEL



Questions or Concerns?

Contact us at:  [info@storeyourboard.com](mailto:info@storeyourboard.com)



# IMPORTANT INFORMATION

---

PivotPanel

Proudly Designed in Virginia, USA  
Manufactured for Spire LLC in Vietnam

Quantity: 1

**WARNING! The PivotPanel is NOT intended for use by any person under the age of 18 years old. You must be over the age of 18 to install or use the PivotPanel .**

**WARNING! Strictly follow all instructions to avoid an accident, damage to property, personal injury or death.**

**WARNING! Do not use this product for human suspension. Components can fail causing person to fall, possibly resulting in serious injury or death.**

**WARNING! When operating system, make sure the area below object is clear of persons. If object comes down too quickly, this can cause an accident.**

## READ THE ENTIRE USER MANUAL BEFORE INSTALLATION

The User Manual you received with your PivotPanel provides instructions on how to install and use your PivotPanel . The instructions are written for a person with a basic understanding of tools and procedures. Read the entire manual before proceeding. If you do not understand any portion of the instructions, do not attempt installation, and email [info@storeyourboard.com](mailto:info@storeyourboard.com).

## CORRECTLY INSTALL THE PRODUCT

Read and follow all instructions carefully.

Failure to properly install and use the PivotPanel could allow the product to detach from the wall, injuring persons or personal property in the process. Accordingly, it is critical that the PivotPanel be installed correctly and according to the instructions in the User Manual.

## USE TOOLS SAFELY

The procedures in the User Manual may require climbing ladders and/or operating power tools. Make sure you are familiar with these tools and their safety procedures before attempting to use such tools during installation. Always be aware of electrical wires during installation. Failure to do so could result in an electrical shock or death.

## WARNING!

Contact with wires can give you a severe electrical shock, which may cause injury or death. If you do not know where wires are, have the work done by an experienced professional.



# IMPORTANT INFORMATION

---

## CAUTION

It is the consumer's responsibility to install this system in accordance with all codes, ordinances, and local regulations.

When installing PivotPanel , it is the consumer's responsibility to ensure the structural integrity of the structure it is being mounted to.

The PivotPanel is intended for the storage of tools only. Do not use it for any other purpose.

This system has a maximum capacity of 50 lbs distributed evenly. Overloading the system could result in damage to property or injury.

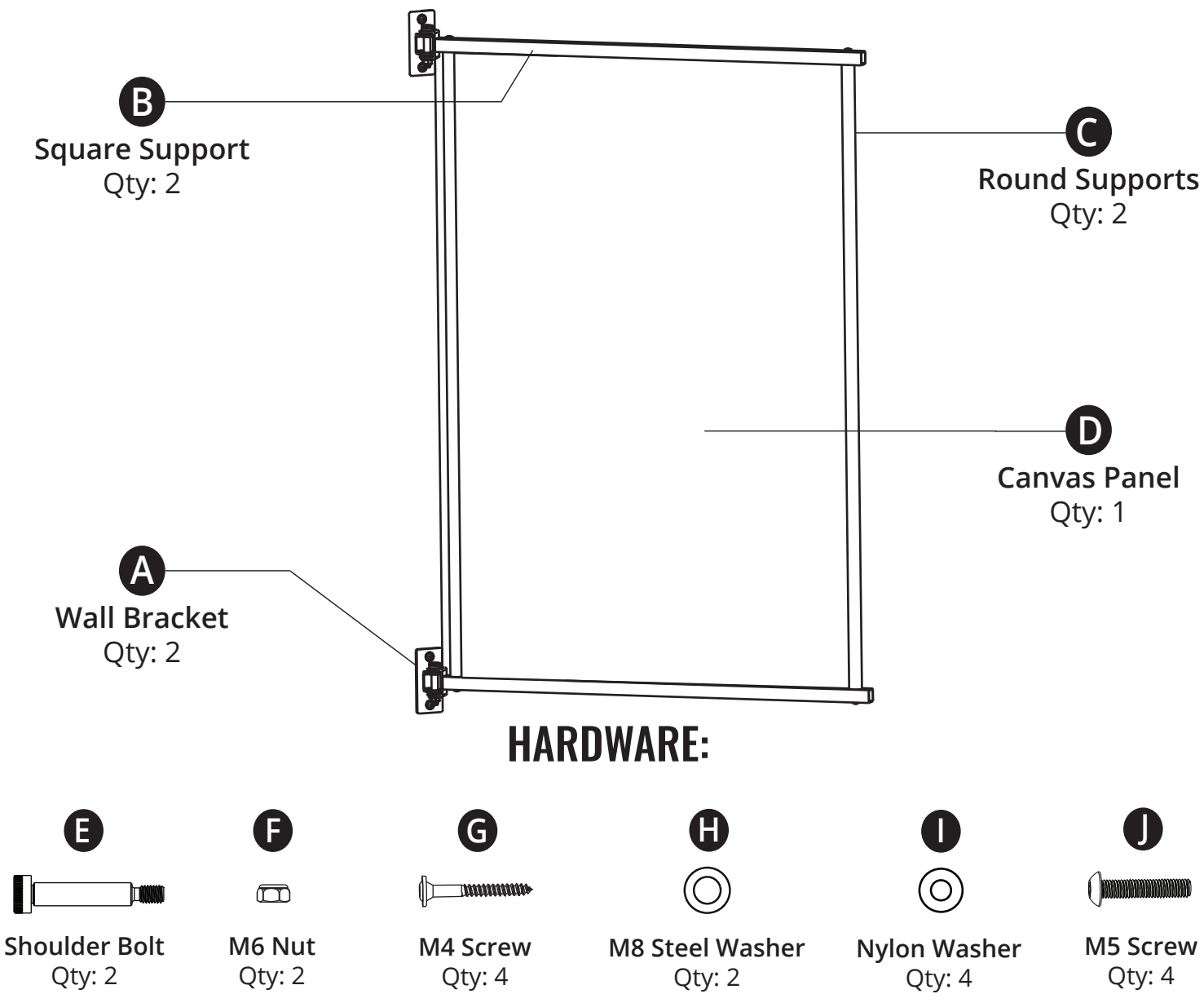
Use extreme caution when loading and unloading equipment from this system.

It is the consumer's responsibility to ensure that the system is in proper working condition before loading objects onto the system. Check tightness of all bolts and screws periodically. Failure to properly maintain the system could result in damage to property or injury.

## WARNING AND DISCLAIMER

Spire LLC (d/b/a StoreYourBoard) expressly disclaims any and all liability for personal injury, property damage or loss, whether direct, indirect, incidental, resulting from the incorrect mounting, improper use, inadequate maintenance, or neglect of this system.

# INSTALLATION



## RECOMMENDED TOOLS:

Drill/Driver  
Drill bits  
10mm Wrench  
Level  
Tape measure  
Pencil  
Stud finder

## WEIGHT LIMITS:

50 lbs. / 22.5kg

1

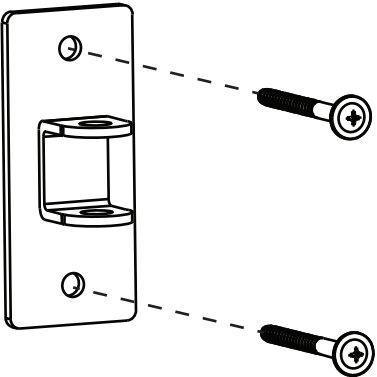
### Mark Stud Locations

- Use a stud finder to locate a wall stud where you want to mount the rack.
- Mark the stud location with a pencil for reference.

2

### Mount Top Wall Bracket

- Determine the height you'd like the system to be at.
- Take a Wall Bracket and hold it inline with the stud that you found in step 1 and mark the holes with a pencil. Ensure that the bracket is square using a level before marking.
- Drill using a 1/8" drill bit at the marked locations.
- Fasten the bracket to the wall using the included M4 Screws (G).



3

### Mount Bottom Wall Bracket

- Measure 29" down from the center of the bottom hole on the top bracket and make a mark in line with the stud.
- Repeat Step 2 to secure the bottom bracket.



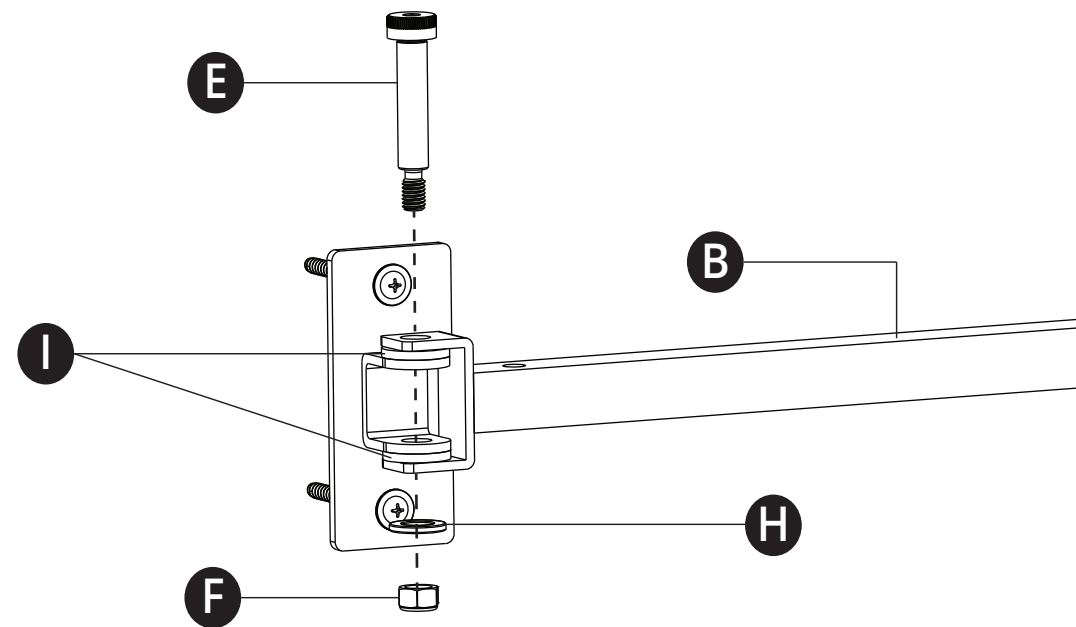
NOTE: The distance isn't drawn to scale

# INSTALLATION

4

## Mount the Main Subassembly

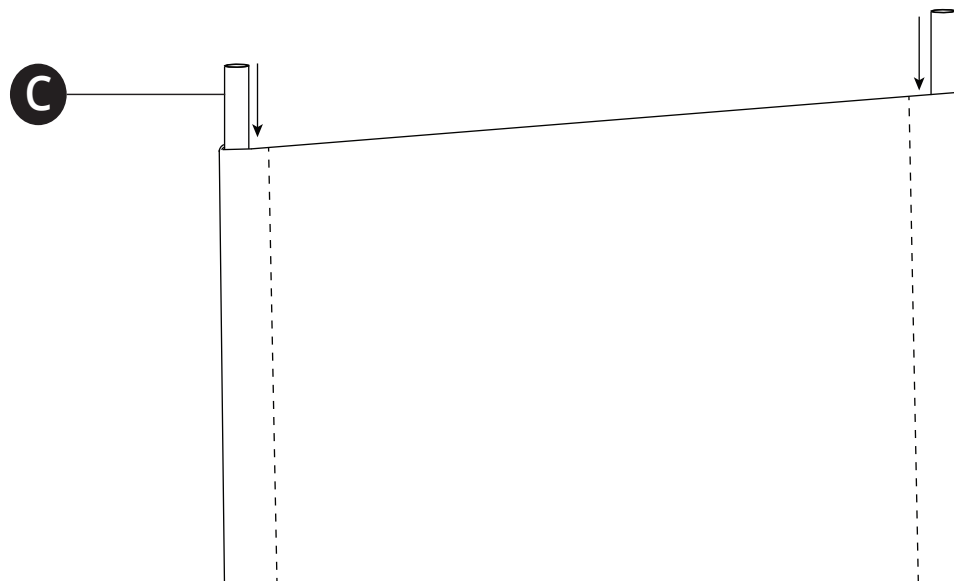
- Assemble a Square Support (B) to each Wall Bracket as seen below.
- Don't fully tighten yet.



5

## Slide Round Supports Through Canvas Panel

- Slide each round support (C) into the tunnel of the Canvas Panel (D).



6

## Mount the Panel

- Choose which way you would like the panel to face.
- Using the included M5 screws, thread them in a few turns.
- Once you have all screws threaded, tighten them all down.
- Fully tighten the wall mounts.
- Make the panel taught by wrapping the nylon strap over the Square Support, through the buckle, and then back on itself.

